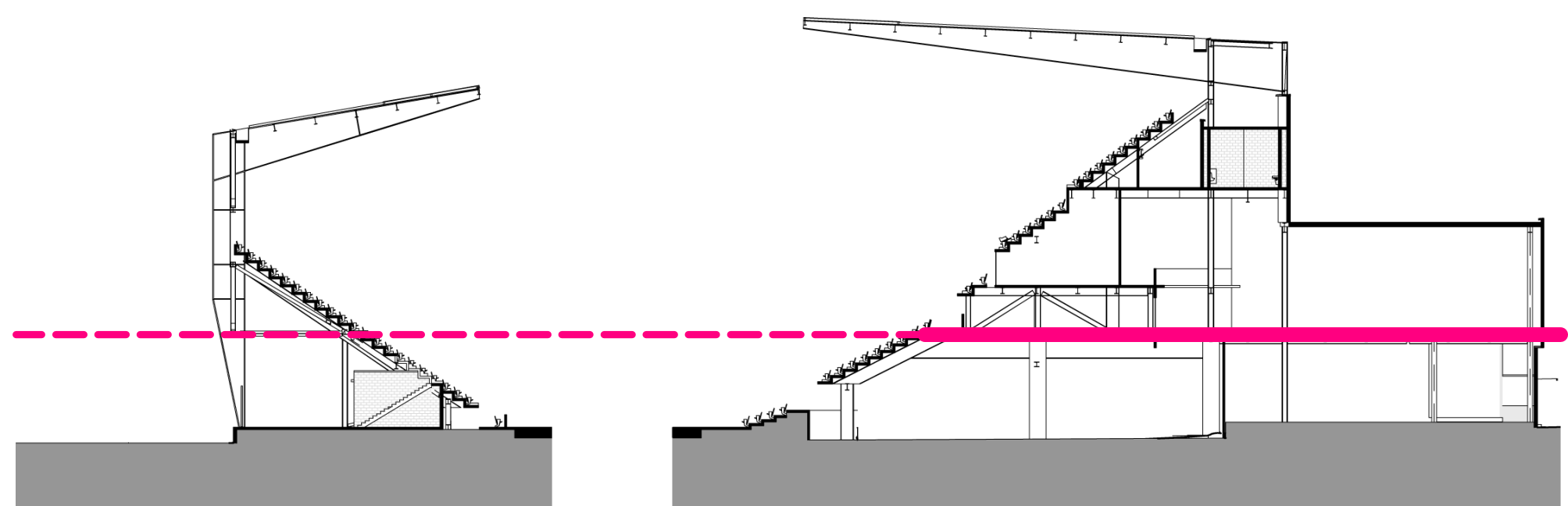


**PUBLIC REALM - NOT PART OF PUD SUBMISSION, DESIGN INTENT SHOWN FOR REFERENCE ONLY**

**DISTRICT OF COLUMBIA RESPONSIBLE FOR DESIGN OF PUBLIC REALM**

**SPACE LEGEND**

- 1 Player Field Tunnel
- 2 Stadium MEP Space
- 3 Team Sport Facilities / Officials / Talent
- 4 Press / Media Facilities
- 5 Stadium Operations and Support
- 6 Fan Amenities - Restrooms
- 7 Fan Amenities - Concessions
- 8 Food Service and Food Service Support
- 9 Premium Space - Suites
- 10 Premium Space - Clubs
- 11 Retail - DC United Team Store
- 12 Retail - Leaseable Open Retail Space
- 13 Office Space - DC United
- 14 Office Space - Leaseable Open Office Space
- 15 Ticketing + Will Call
- 16 Circulation - Concourse
- 17 Circulation - Vertical
- 18 Circulation - Loading Dock + Truck Yard

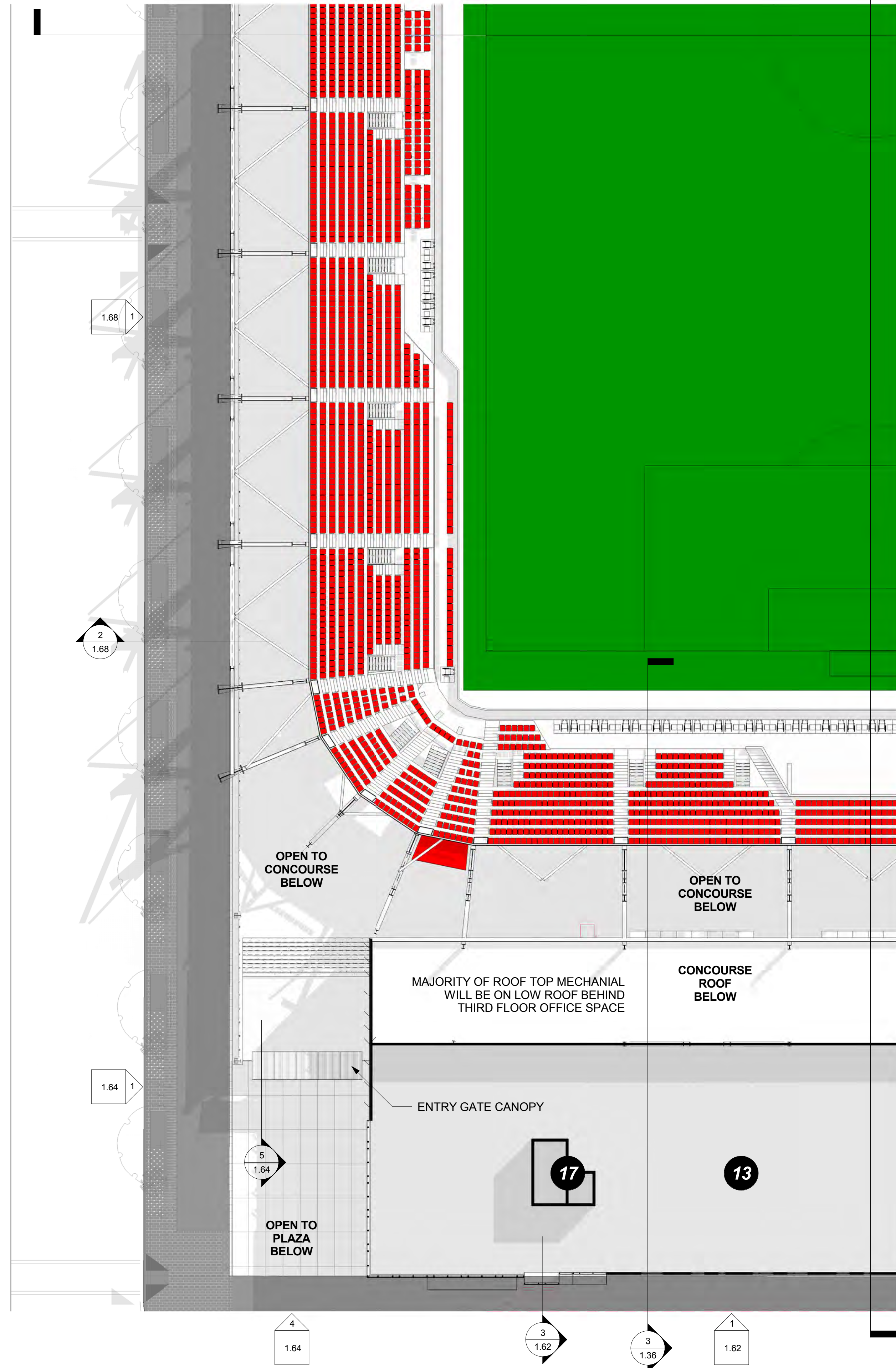


WEST SECTION

EAST SECTION



1 CLUB LEVEL AREA PLAN - AREA C  
1" = 20'-0"



INTERIOR LAYOUTS ARE ILLUSTRATIVE ONLY AND SUBJECT TO CHANGE ON FINAL PLAN

**POPULOUS**

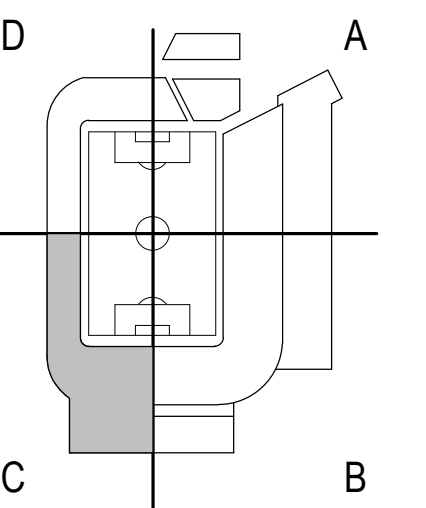
Marshall | Moya Design



DC UNITED SOCCER STADIUM

100 Potomac Avenue, SW  
Washington, DC 20024

100% PUD SUBMISSION



CLUB LEVEL AREA PLAN - AREA C

1.41



PROJECT NORTH

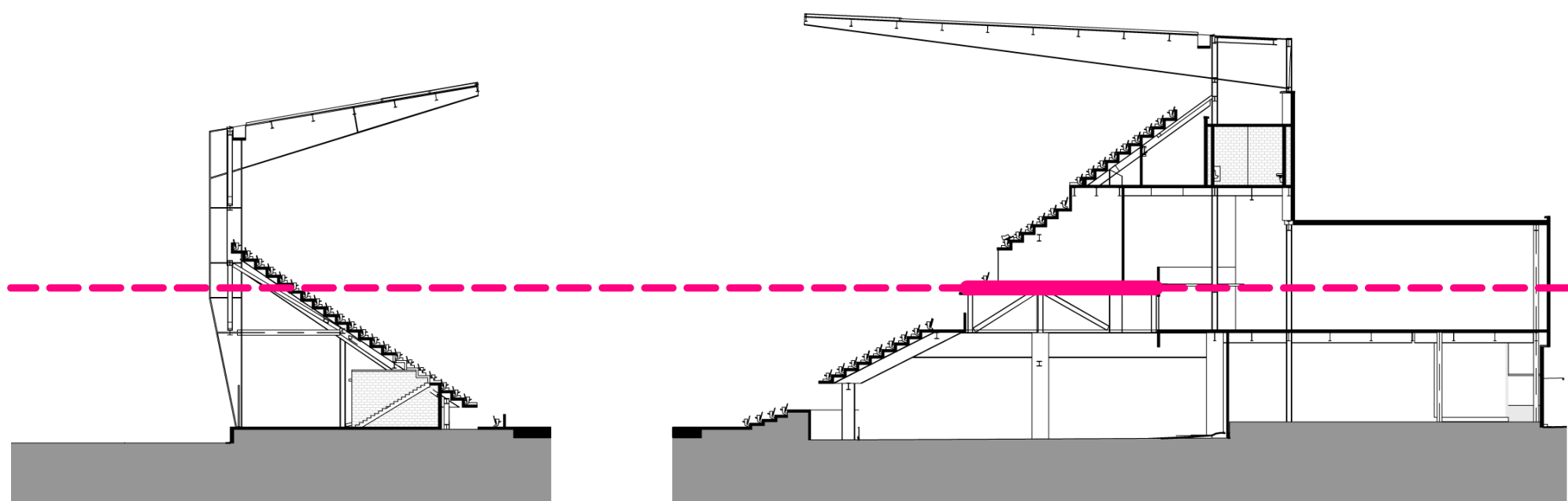
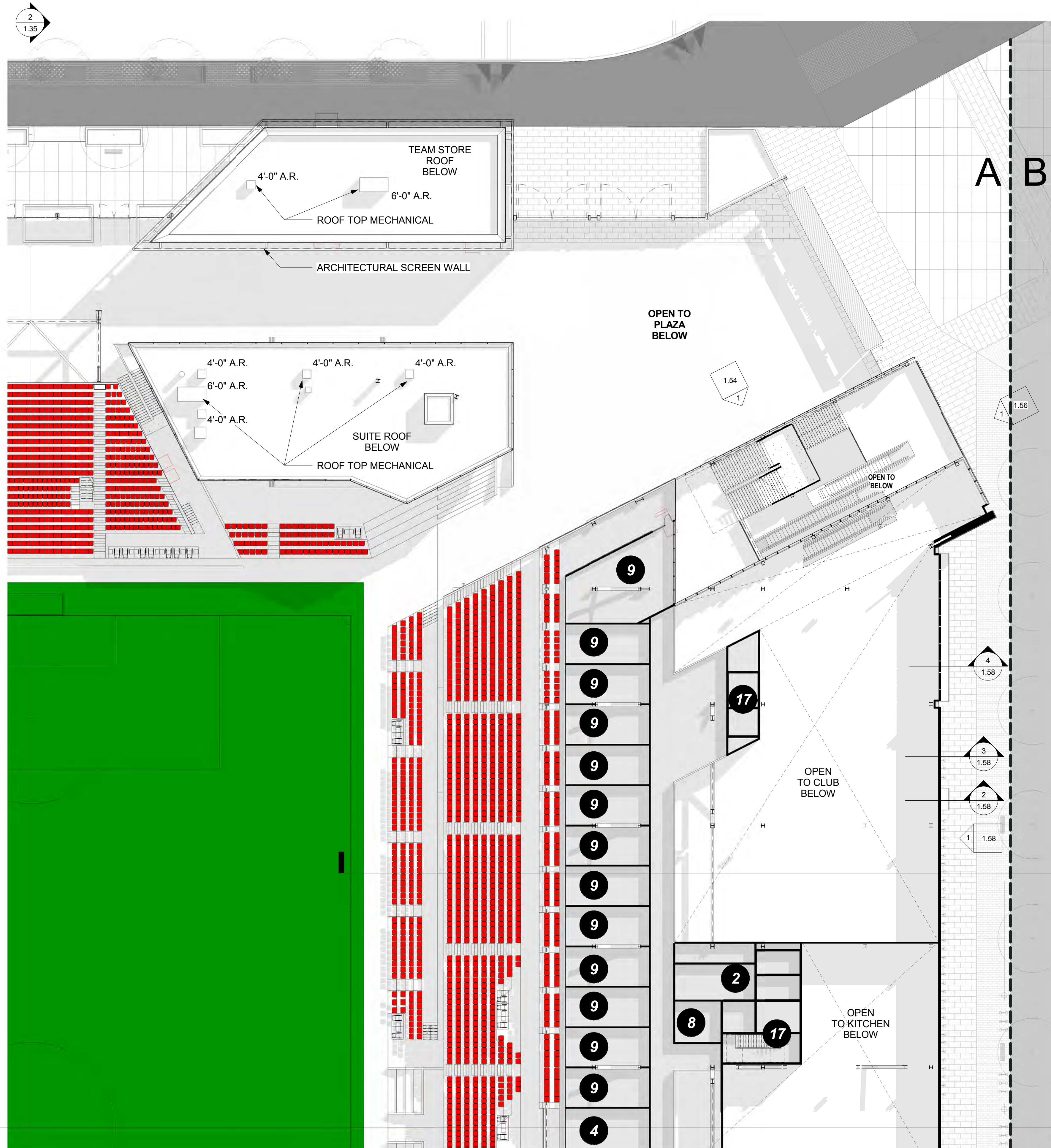
**PART B - NOT PART OF STADIUM PUD SUBMISSION, DESIGN INTENT SHOWN FOR REFERENCE ONLY**

**PUBLIC REALM - NOT PART OF PUD SUBMISSION, DESIGN INTENT SHOWN FOR REFERENCE ONLY**

**DISTRICT OF COLUMBIA RESPONSIBLE FOR DESIGN OF PUBLIC REALM**

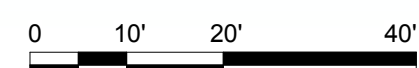
**SPACE LEGEND**

- 1 Player Field Tunnel
- 2 Stadium MEP Space
- 3 Team Sport Facilities / Officials / Talent
- 4 Press / Media Facilities
- 5 Stadium Operations and Support
- 6 Fan Amenities - Restrooms
- 7 Fan Amenities - Concessions
- 8 Food Service and Food Service Support
- 9 Premium Space - Suites
- 10 Premium Space - Clubs
- 11 Retail - DC United Team Store
- 12 Retail - Leaseable Open Retail Space
- 13 Office Space - DC United
- 14 Office Space - Leaseable Open Office Space
- 15 Ticketing + Will Call
- 16 Circulation - Concourse
- 17 Circulation - Vertical
- 18 Circulation - Loading Dock + Truck Yard



WEST SECTION

EAST SECTION



1 SUITE LEVEL AREA PLAN - AREA A  
1" = 20'-0"

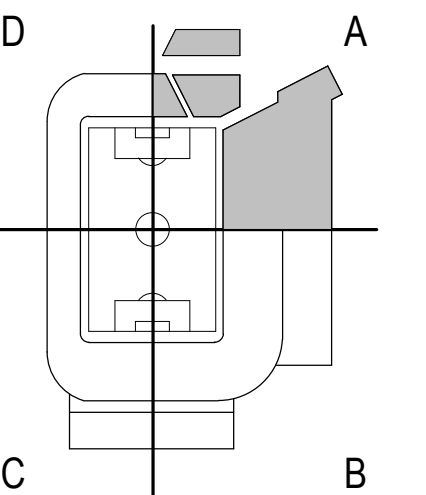
INTERIOR LAYOUTS ARE ILLUSTRATIVE ONLY AND SUBJECT TO CHANGE ON FINAL PLAN

**POPULOUS**  
Marshall | Moya Design



DC UNITED SOCCER STADIUM  
100 Potomac Avenue, SW  
Washington, DC 20024

100% PUD SUBMISSION



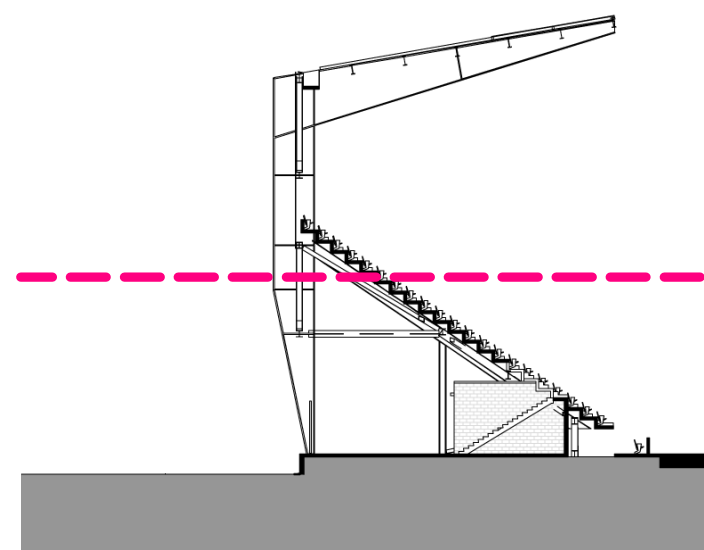
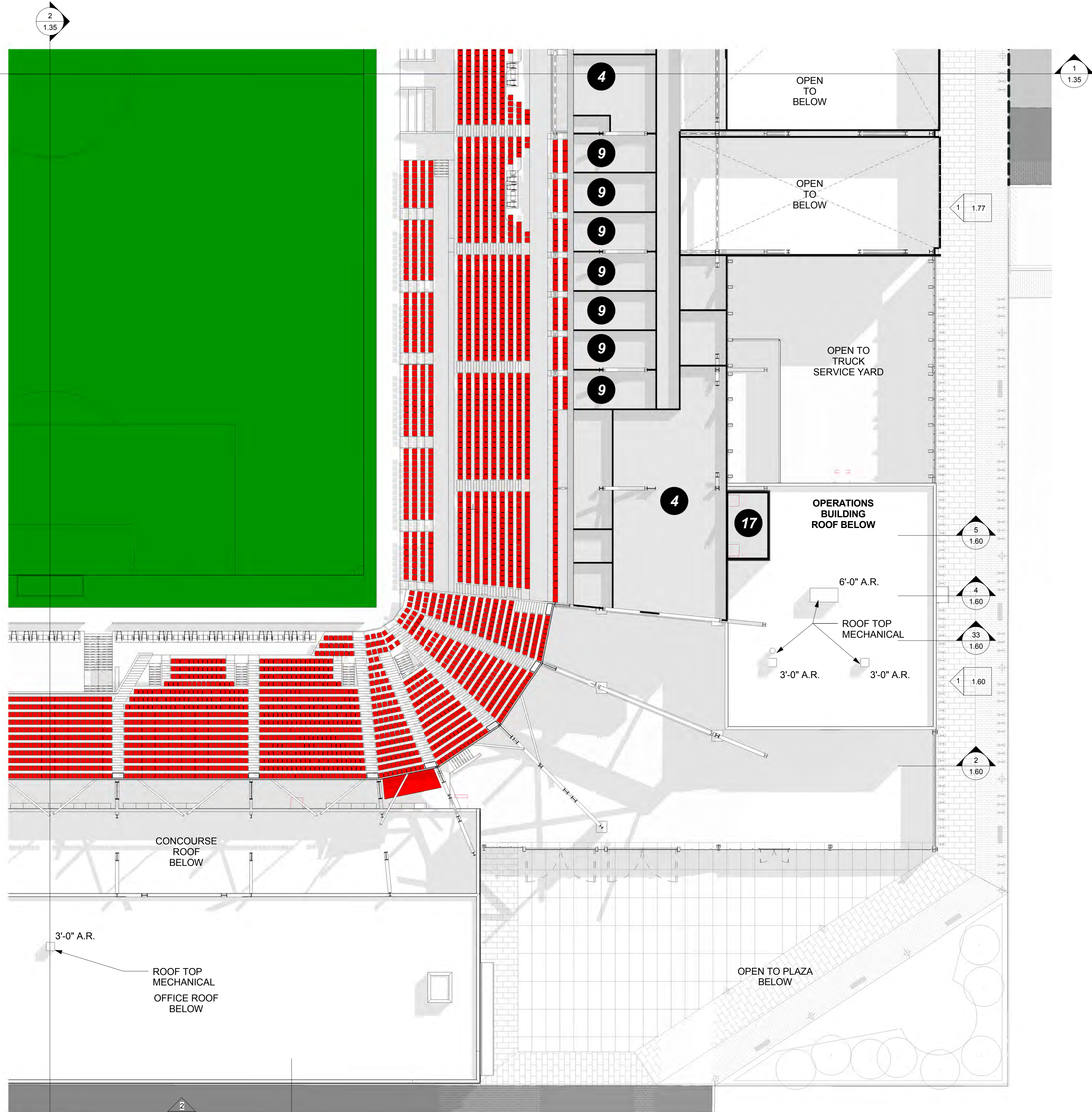
SUITE LEVEL AREA PLAN - AREA A

**PUBLIC REALM - NOT PART OF PUD SUBMISSION, DESIGN INTENT SHOWN FOR REFERENCE ONLY**

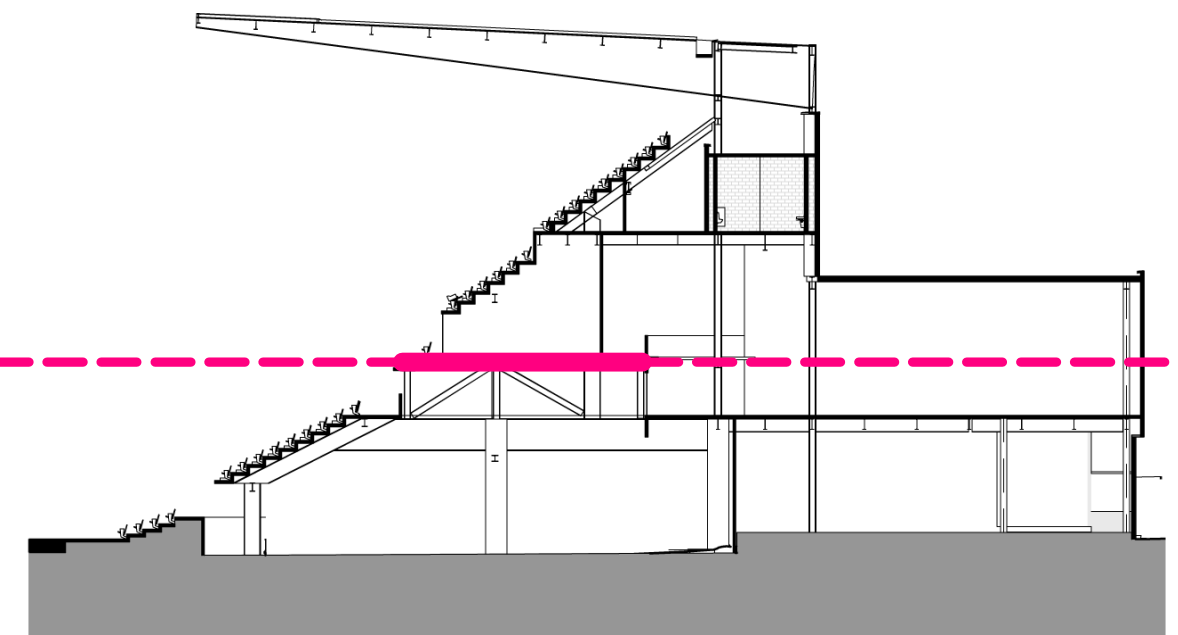
**DISTRICT OF COLUMBIA RESPONSIBLE FOR DESIGN OF PUBLIC REALM**

**SPACE LEGEND**

- 1 Player Field Tunnel
- 2 Stadium MEP Space
- 3 Team Sport Facilities / Officials / Talent
- 4 Press / Media Facilities
- 5 Stadium Operations and Support
- 6 Fan Amenities - Restrooms
- 7 Fan Amenities - Concessions
- 8 Food Service and Food Service Support
- 9 Premium Space - Suites
- 10 Premium Space - Clubs
- 11 Retail - DC United Team Store
- 12 Retail - Leaseable Open Retail Space
- 13 Office Space - DC United
- 14 Office Space - Leaseable Open Office Space
- 15 Ticketing + Will Call
- 16 Circulation - Concourse
- 17 Circulation - Vertical
- 18 Circulation - Loading Dock + Truck Yard



WEST SECTION



EAST SECTION

**POPULOUS**

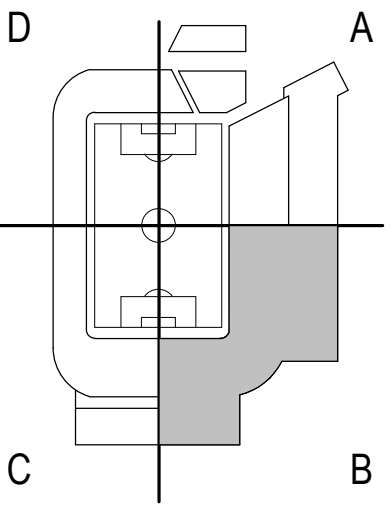
Marshall | Moya Design



DC UNITED SOCCER STADIUM

100 Potomac Avenue, SW  
Washington, DC 20024

100% PUD SUBMISSION



SUITE LEVEL AREA PLAN - AREA B



INTERIOR LAYOUTS ARE ILLUSTRATIVE ONLY AND SUBJECT TO CHANGE ON FINAL PLAN

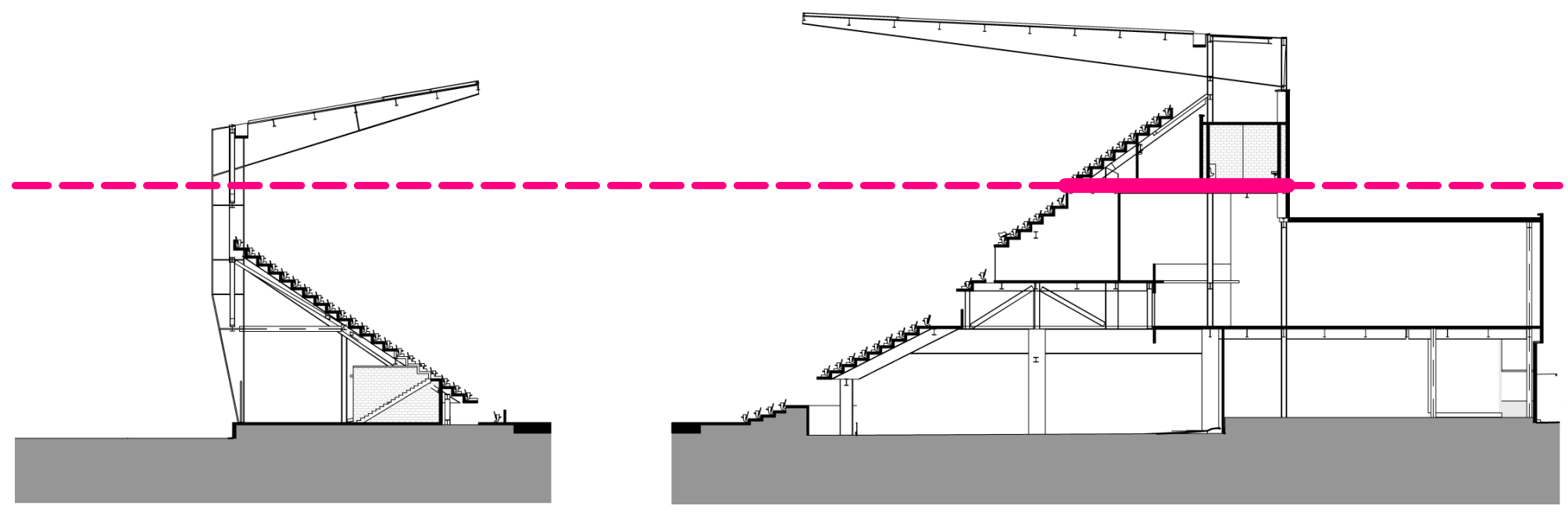
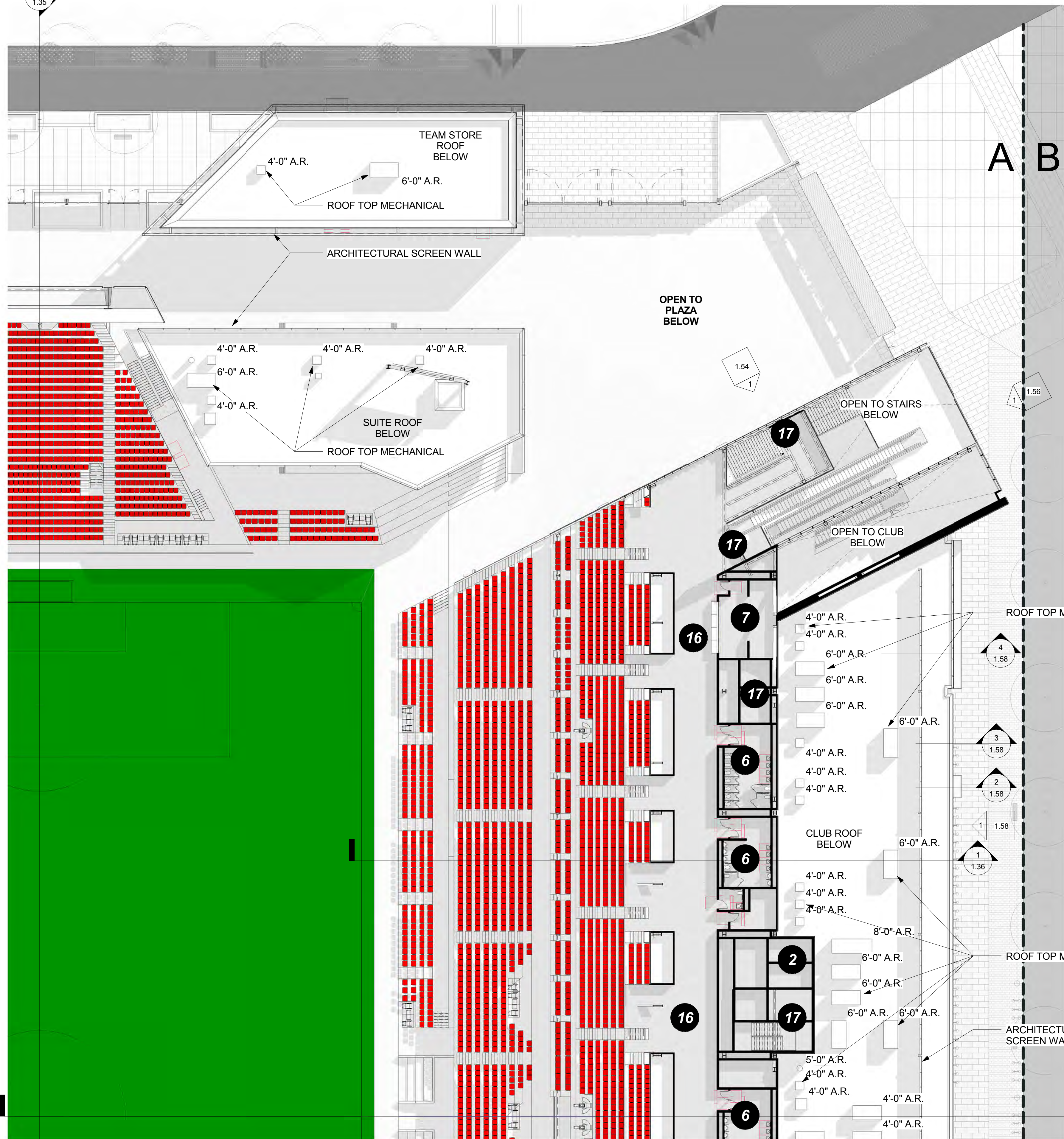
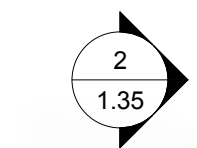
**PART B - NOT PART OF STADIUM PUD SUBMISSION, DESIGN INTENT SHOWN FOR REFERENCE ONLY**

**PUBLIC REALM - NOT PART OF PUD SUBMISSION, DESIGN INTENT SHOWN FOR REFERENCE ONLY**

**DISTRICT OF COLUMBIA RESPONSIBLE FOR DESIGN OF PUBLIC REALM**

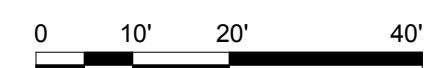
### SPACE LEGEND

- 1 Player Field Tunnel
- 2 Stadium MEP Space
- 3 Team Sport Facilities / Officials / Talent
- 4 Press / Media Facilities
- 5 Stadium Operations and Support
- 6 Fan Amenities - Restrooms
- 7 Fan Amenities - Concessions
- 8 Food Service and Food Service Support
- 9 Premium Space - Suites
- 10 Premium Space - Clubs
- 11 Retail - DC United Team Store
- 12 Retail - Leaseable Open Retail Space
- 13 Office Space - DC United
- 14 Office Space - Leaseable Open Office Space
- 15 Ticketing + Will Call
- 16 Circulation - Concourse
- 17 Circulation - Vertical
- 18 Circulation - Loading Dock + Truck Yard



WEST SECTION

EAST SECTION



1 UPPER CONCOURSE LEVEL PLAN - AREA A  
1" = 20'-0"

INTERIOR LAYOUTS ARE ILLUSTRATIVE ONLY AND SUBJECT TO CHANGE ON FINAL PLAN

**POPULOUS**

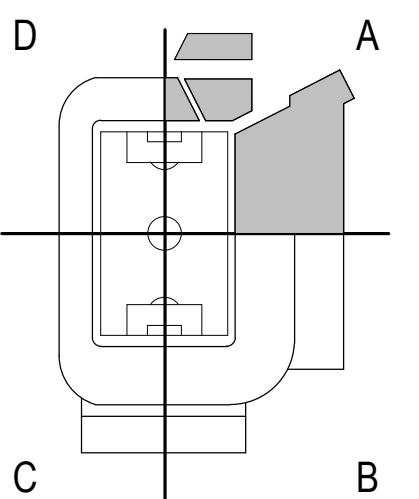
Marshall | Moya Design



DC UNITED SOCCER STADIUM

100 Potomac Avenue, SW  
Washington, DC 20024

100% PUD SUBMISSION



UPPER CONCOURSE LEVEL AREA PLAN - AREA A

1.44

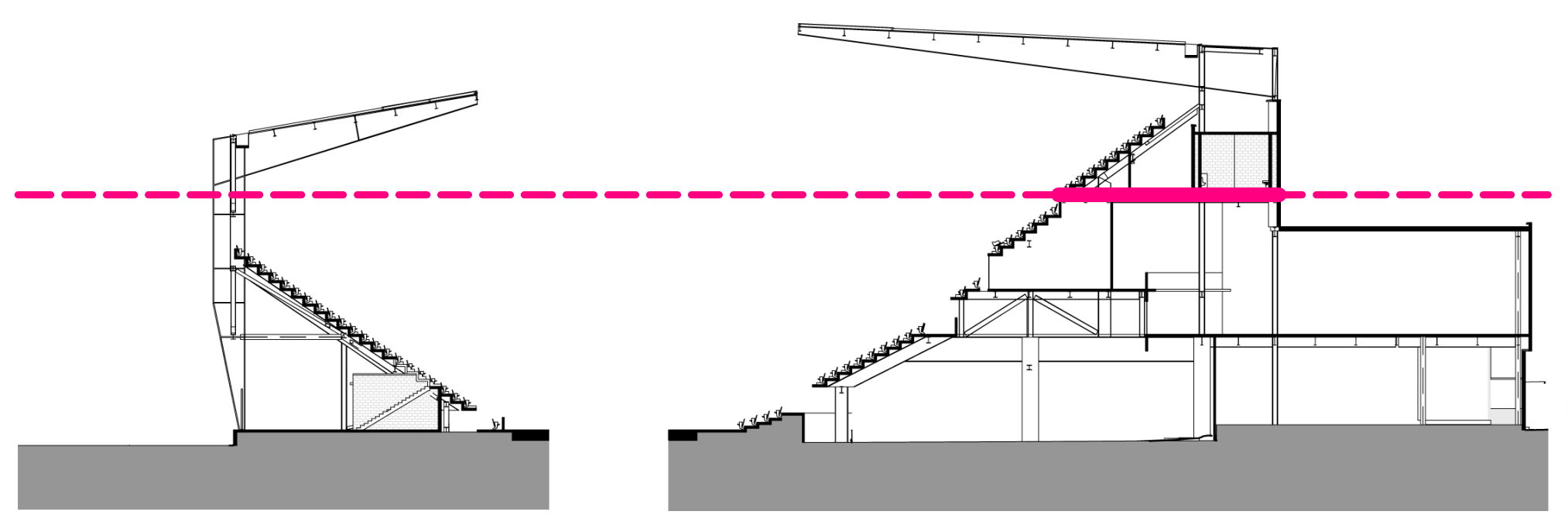
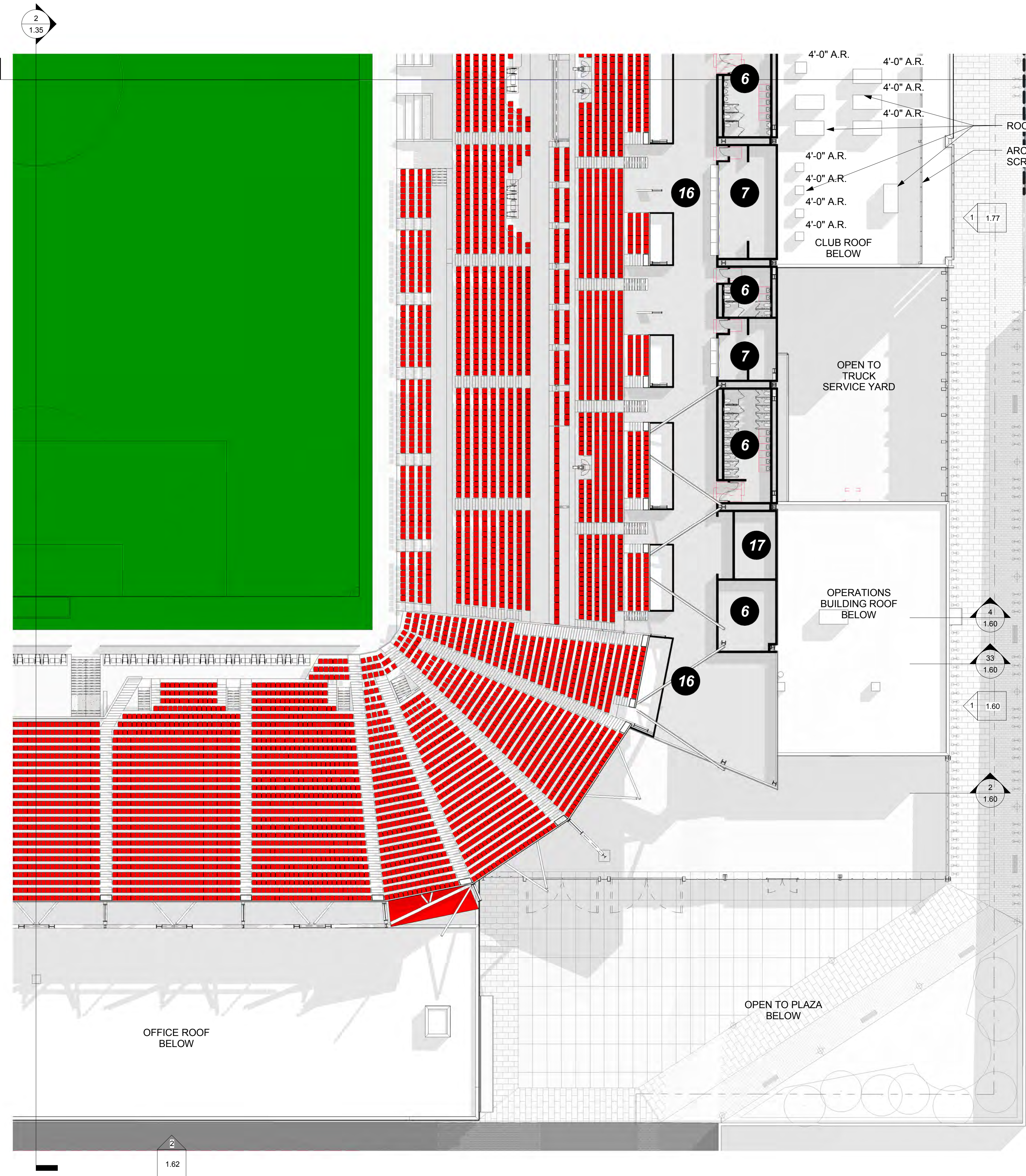


**PUBLIC REALM - NOT PART OF PUD SUBMISSION, DESIGN INTENT SHOWN FOR REFERENCE ONLY**

**DISTRICT OF COLUMBIA RESPONSIBLE FOR DESIGN OF PUBLIC REALM**

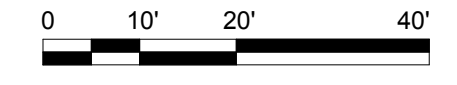
**SPACE LEGEND**

- Player Field Tunnel 1
- Stadium MEP Space 2
- Team Sport Facilities / Officials / Talent 3
- Press / Media Facilities 4
- Stadium Operations and Support 5
- Fan Amenities - Restrooms 6
- Fan Amenities - Concessions 7
- Food Service and Food Service Support 8
- Premium Space - Suites 9
- Premium Space - Clubs 10
- Retail - DC United Team Store 11
- Retail - Leaseable Open Retail Space 12
- Office Space - DC United 13
- Office Space - Leaseable Open Office Space 14
- Ticketing + Will Call 15
- Circulation - Concourse 16
- Circulation - Vertical 17
- Circulation - Loading Dock + Truck Yard 18



WEST SECTION

EAST SECTION



1 UPPER CONCOURS ELEVEL AREA PLAN - AREA B  
1" = 20'-0"

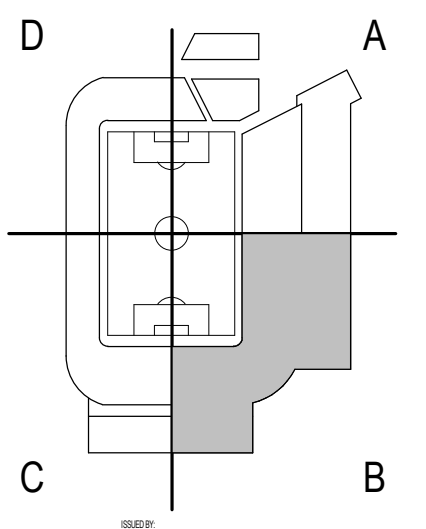
INTERIOR LAYOUTS ARE ILLUSTRATIVE ONLY AND SUBJECT TO CHANGE ON FINAL PLAN

**POPULOUS**  
Marshall | Moya Design



DC UNITED SOCCER STADIUM  
100 Potomac Avenue, SW  
Washington, DC 20024

100% PUD SUBMISSION



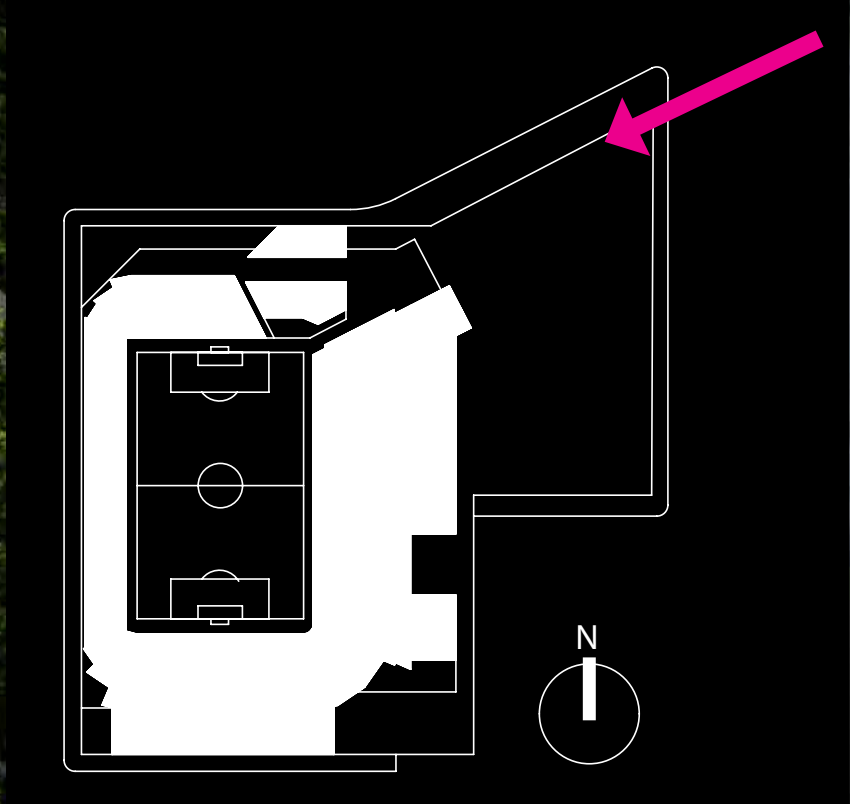
UPPER CONCOURSE  
LEVEL AREA PLAN - AREA  
B

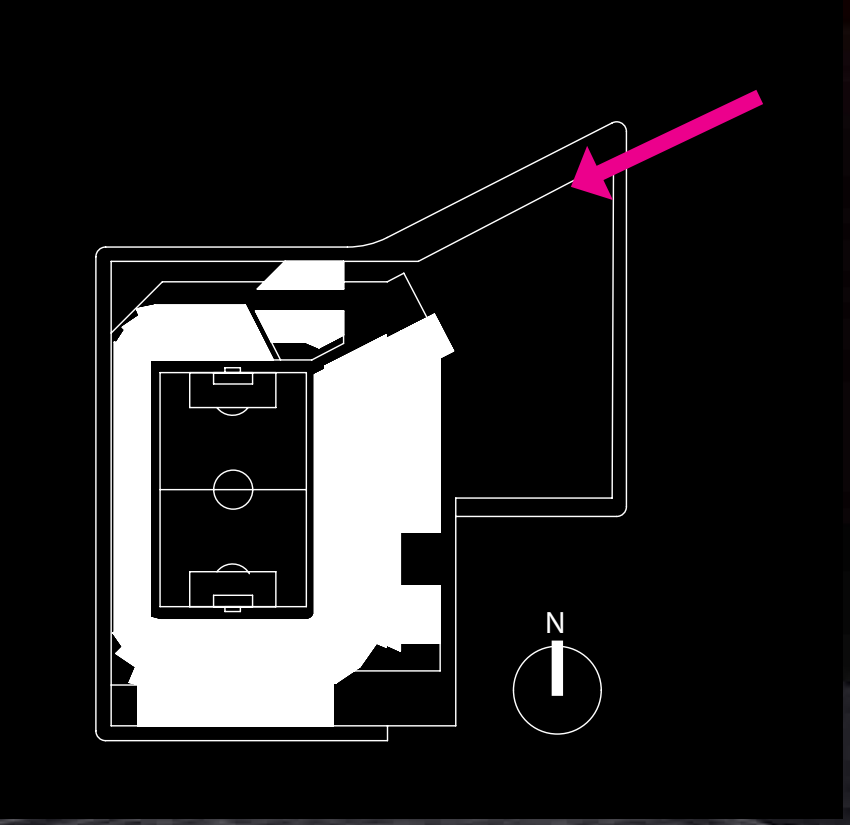
1.45





**HALF ST. & POTOMAC AVE. AERIAL**

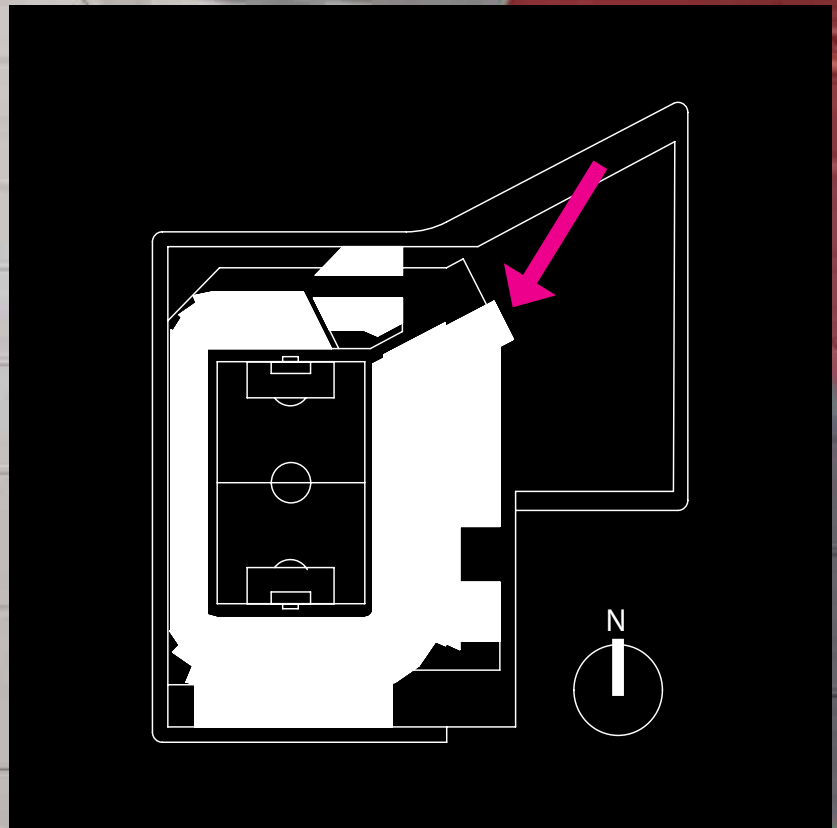




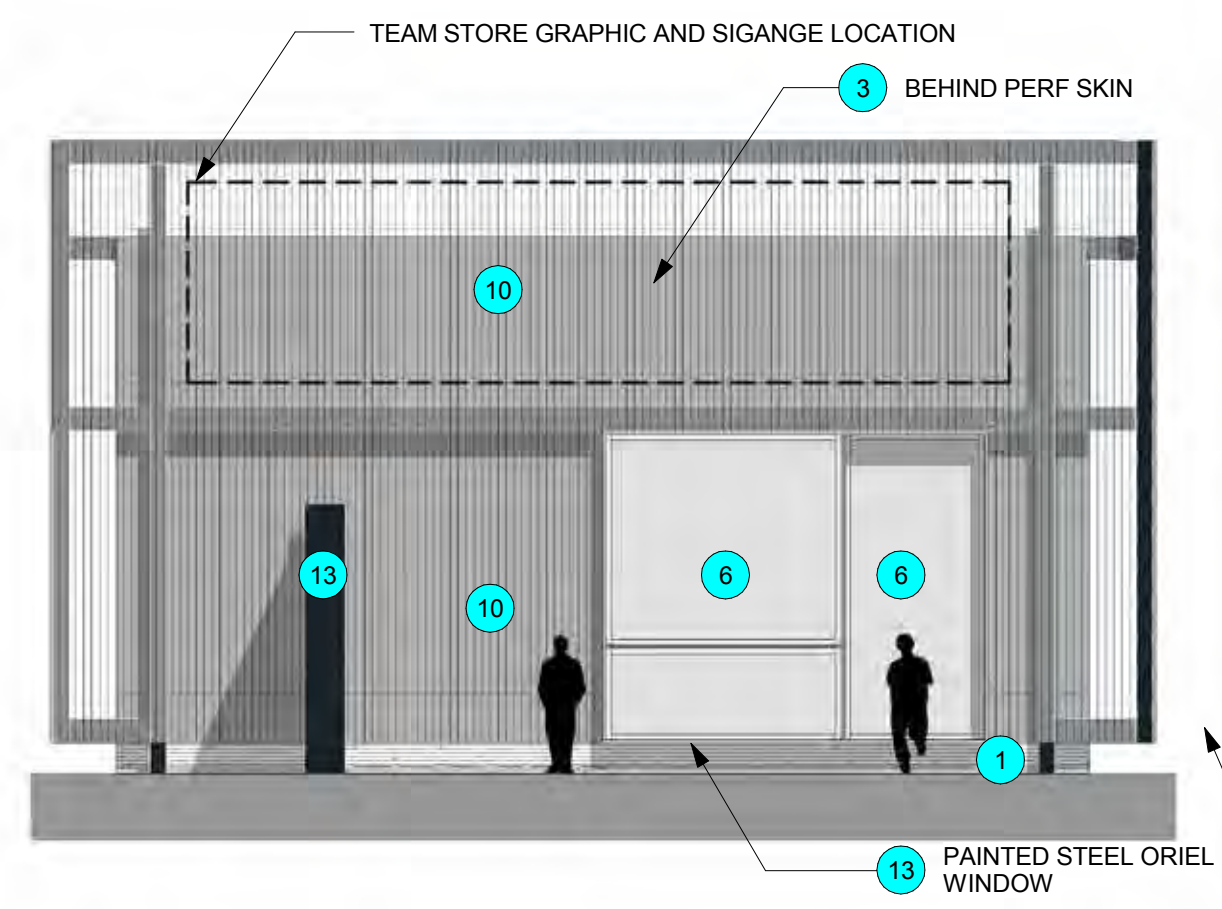
**HALF ST. & POTOMAC AVE. LOOKING WEST**



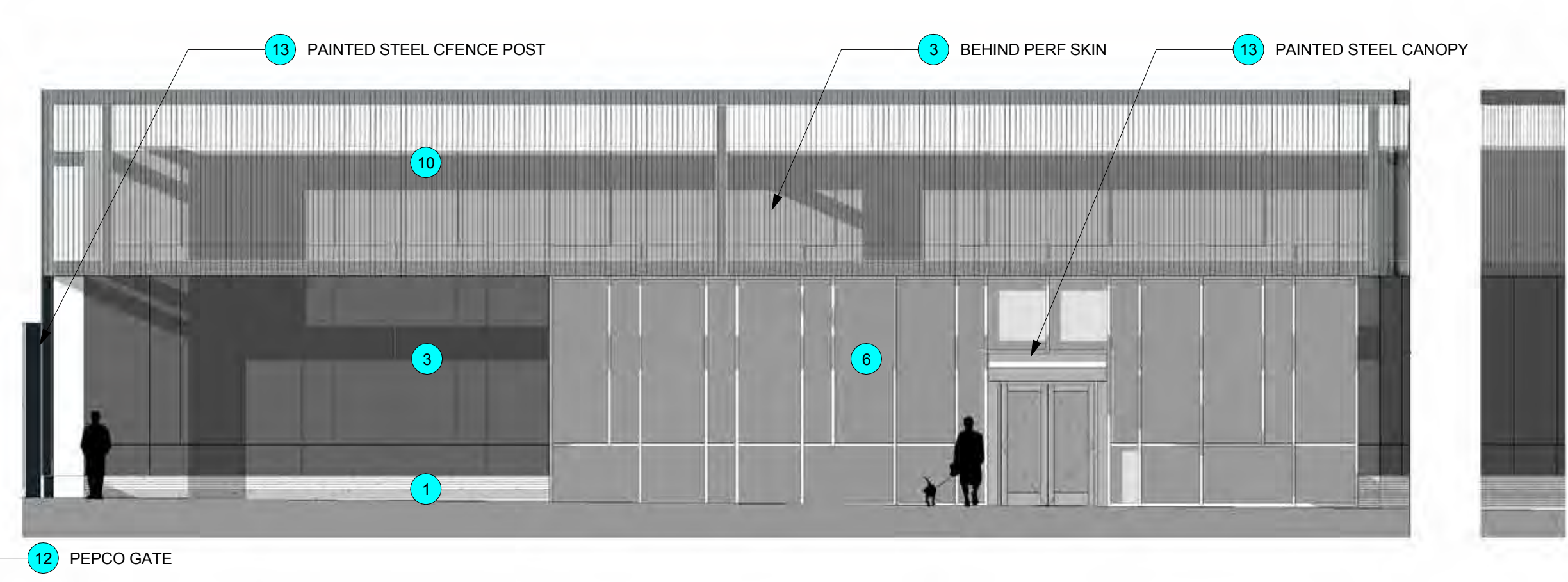
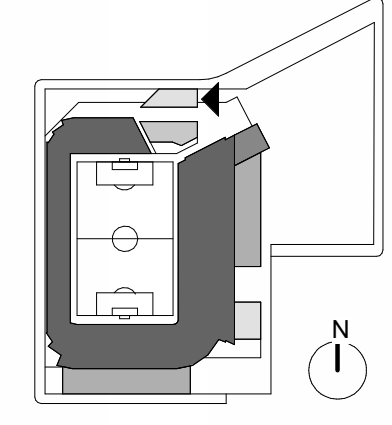
**NORTHEAST ENTRY**



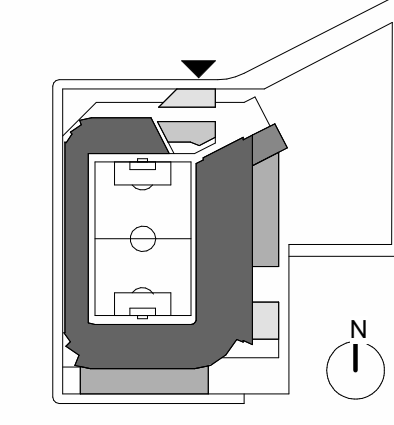




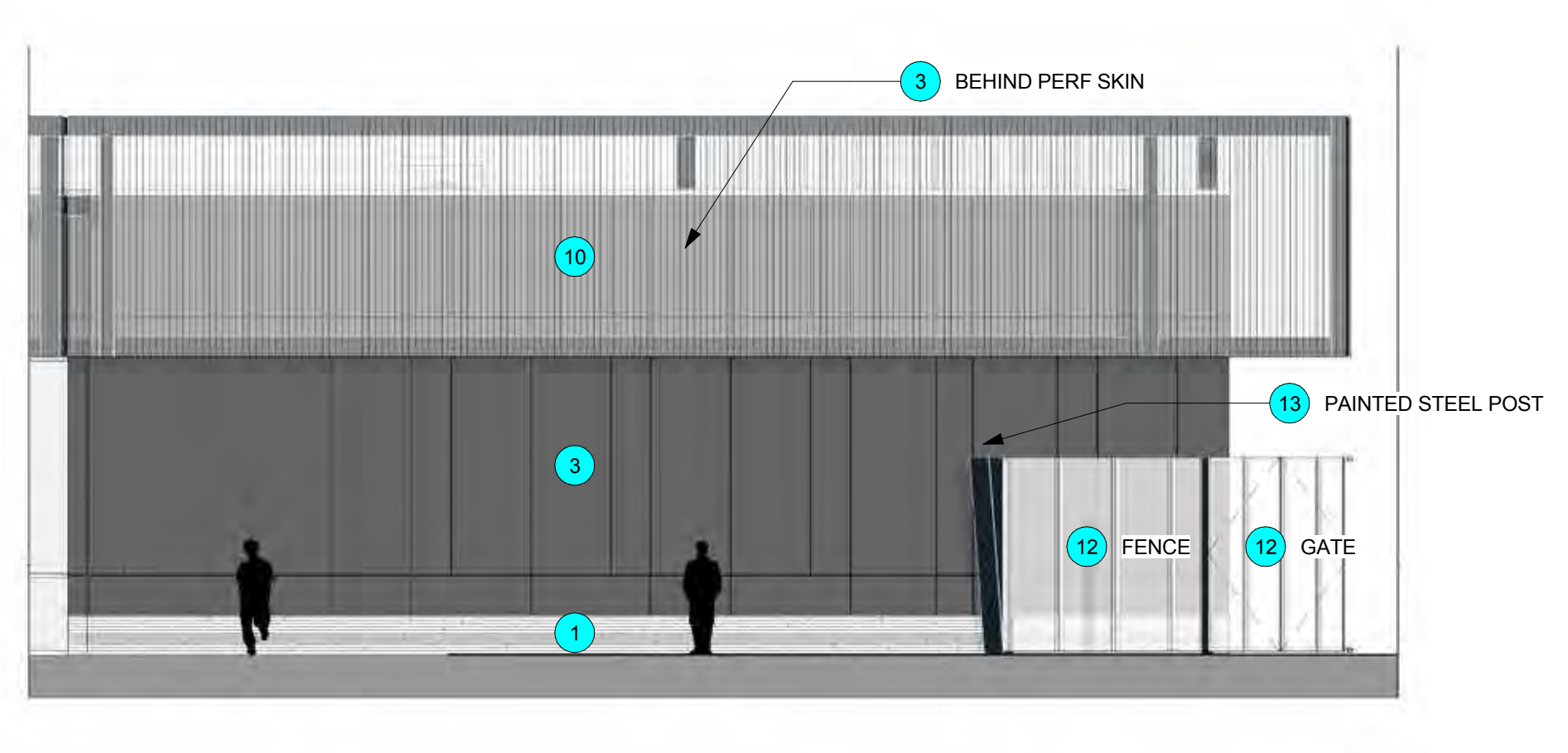
1 TEAM STORE ELEVATION - EAST  
1/8" = 1'-0"



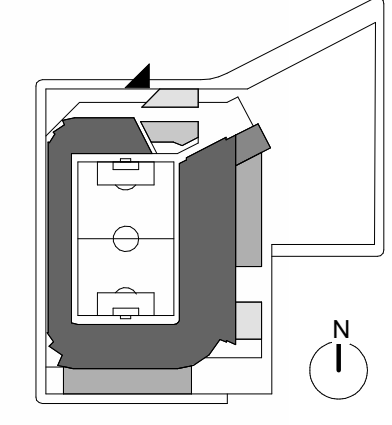
2 TEAM STORE ELEVATION - NORTH  
1/8" = 1'-0"



EXTERIOR MATERIALS SIZES AND ORIENTATION ARE AT SCHEMATIC DESIGN LEVEL, PANEL SIZE AND ORIENTATION MAY CHANGE FOR CONSTRUCTABILITY AND PROGRESS IN DESIGN



3 TEAM STORE ELEVATION - WEST  
1/8" = 1'-0"



- 1 FORM LINER CIP CONCRETE - WOOD PLANK TEXTURE
- 2 CIP CONCRETE - SMOOTH TEXTURE EXPOSED CONE TIES
- 3 GLASS FIBER REINFORCED CONCRETE PANEL - TYPE 1
- 4 GLASS FIBER REINFORCED CONCRETE PANEL - TYPE 2
- 5 GLASS FIBER REINFORCED CONCRETE PANEL - TYPE 3
- 6 ALUMINUM STOREFRONT W / VISION GLASS
- 7 ALUMINUM CURTAIN WALL W / VISION GLASS
- 8 MP1 CORRUGATED METAL PANEL NATURAL ZINC
- 9 MP2 FLAT INTERLOCKING METAL PANEL NATURAL ZINC
- 10 MP3 CORRUGATED PERFORATED METAL PANEL NATURAL ZINC
- 11 MP4 METAL MESH FENCE @ ENTRY GATES
- 12 MP5 PERFORATED MILL ALUMINUM METAL PANEL - FENCE / SCREEN WALL
- 13 MP6 PANTED STEEL - ENTRY CANOPY, ORIEL WINDOW DISPLAYS, FENCE POSTS, STADIUM STRUCTURAL SUPPORT, MAIN HIGH ROOF CANOPY
- 14 POLYCARBONATE ROOFING
- 15 SIGNAGE, BRANDING, LOGOS + SPONSOR



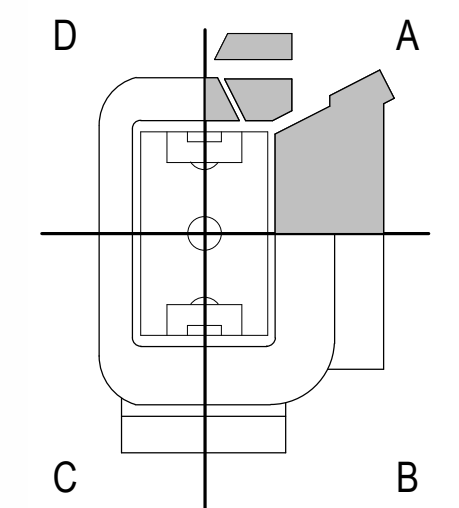
NORTH SIDE OF R ST. LOOKING SOUTH @ TEAM STORE

POPULOUS  
Marshall | Moya Design



DC UNITED SOCCER STADIUM  
100 Potomac Avenue, SW  
Washington, DC 20024

100% PUD SUBMISSION



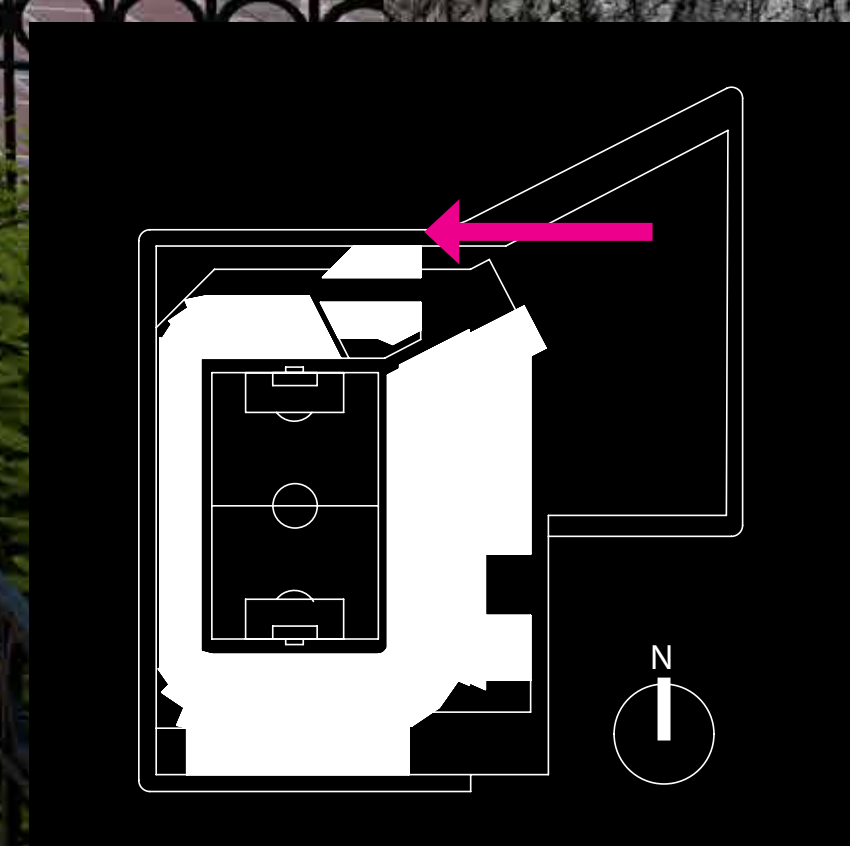
AREA A - ELEVATIONS & DETAILS TEAM STORE

1.50





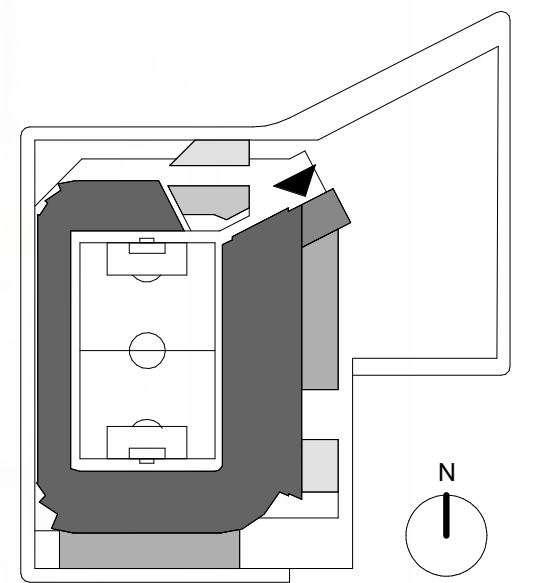
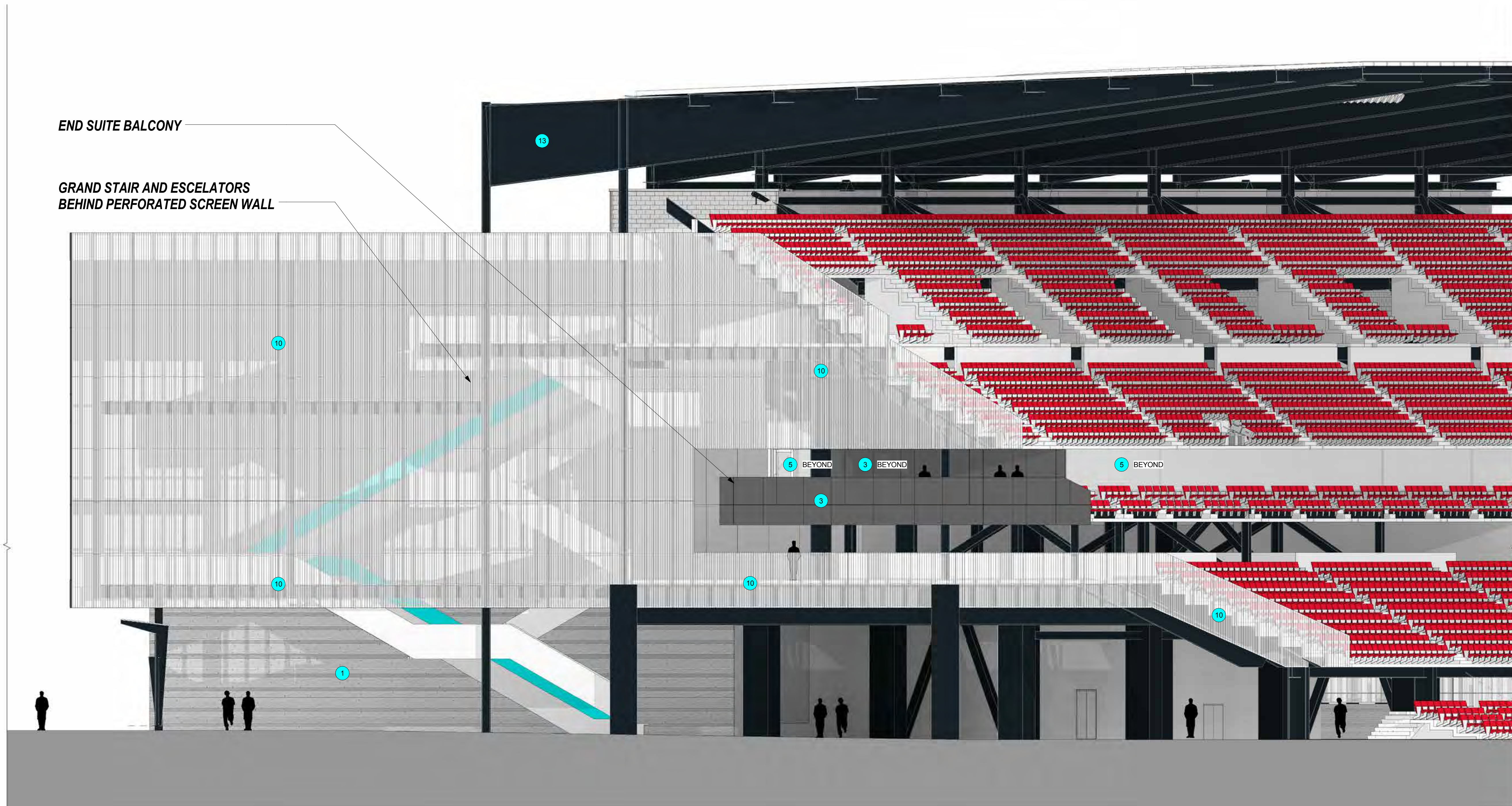
**TEAM STORE RENDERING**



- 1 FORM LINER CIP CONCRETE - WOOD PLANK TEXTURE
- 2 CIP CONCRETE - SMOOTH TEXTURE EXPOSED CONE TIES
- 3 GLASS FIBER REINFORCED CONCRETE PANEL - TYPE 1
- 4 GLASS FIBER REINFORCED CONCRETE PANEL - TYPE 2
- 5 GLASS FIBER REINFORCED CONCRETE PANEL - TYPE 3
- 6 ALUMINUM STOREFRONT W / VISION GLASS
- 7 ALUMINUM CURTAIN WALL W / VISION GLASS
- 8 MP1 CORRUGATED METAL PANEL NATURAL ZINC
- 9 MP2 FLAT INTERLOCKING METAL PANEL NATURAL ZINC
- 10 MP3 CORRUGATED PERFORATED METAL PANEL NATURAL ZINC
- 11 MP4 METAL MESH FENCE @ ENTRY GATES
- 12 MP5 PERFORATED MILL ALUMINUM METAL PANEL - FENCE / SCREEN WALL
- 13 MP6 PANTED STEEL - ENTRY CANOPY, ORIEL WINDOW DISPLAYS, FENCE POSTS, STADIUM STRUCTURAL SUPPORT, MAIN HIGH ROOF CANOPY
- 14 POLYCARBONATE ROOFING
- 15 SIGNAGE, BRANDING, LOGOS + SPONSOR

END SUITE BALCONY

GRAND STAIR AND ESCALATORS  
BEHIND PERFORATED SCREEN WALL



**POPULOUS**

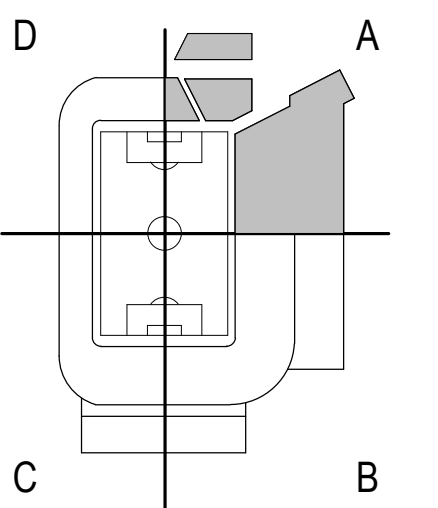
Marshall | Moya Design



DC UNITED SOCCER STADIUM

100 Potomac Avenue, SW  
Washington, DC 20024

100% PUD SUBMISSION



AREA A - ELEVATIONS &  
DETAILS

**SUITE LEVEL BALCONY VIEW LOOKING NORTH ON 1ST ST.**

